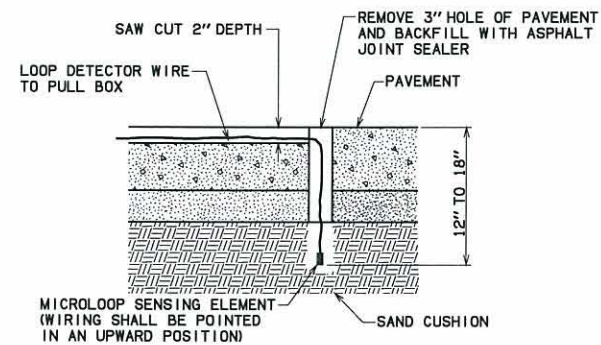
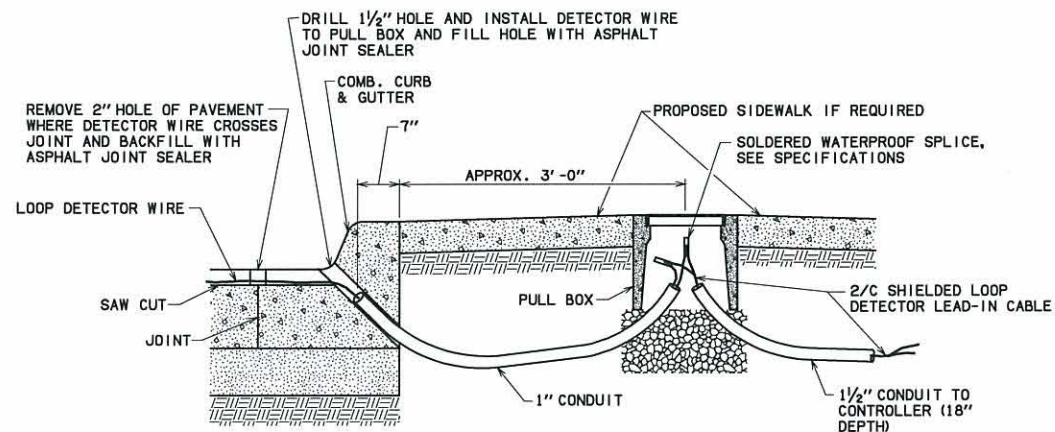


DESCRIPTION	REVISIONS	DATE

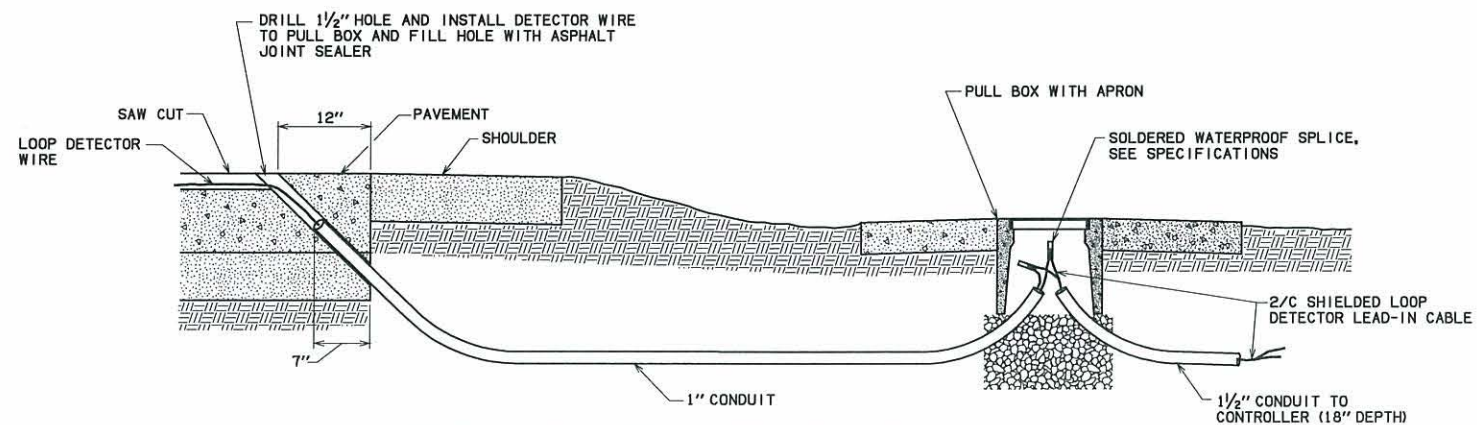


MICROLOOP INSTALLATION DETAIL

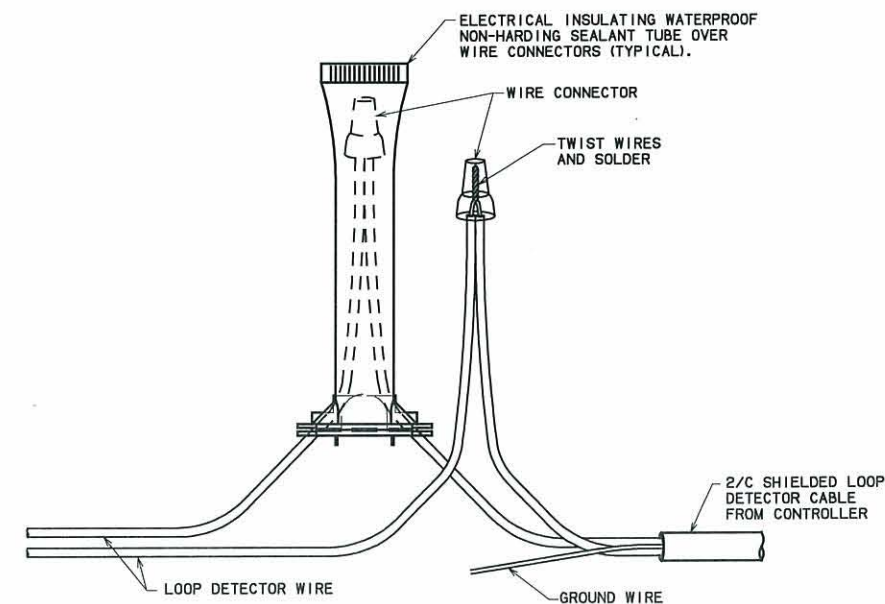


SECTION VIEW OF DETECTOR WIRE THROUGH EXISTING CURB TO PULL BOX

- GENERAL NOTES**
1. EACH SPLICE SHALL HAVE ITS OWN INDIVIDUAL ELECTRICAL INSULATING TUBE OR RESIN PACKAGE.



SECTION VIEW OF DETECTOR WIRE THROUGH PAVEMENT TO PULL BOX



LOOP DETECTOR WIRE CONNECTION DETAIL



APPROVED BY TRAFFIC ENGINEER: *David J. Smith* DATE: 8/15/10

TRAFFIC STANDARD

INSTALLATION OF DETECTORS